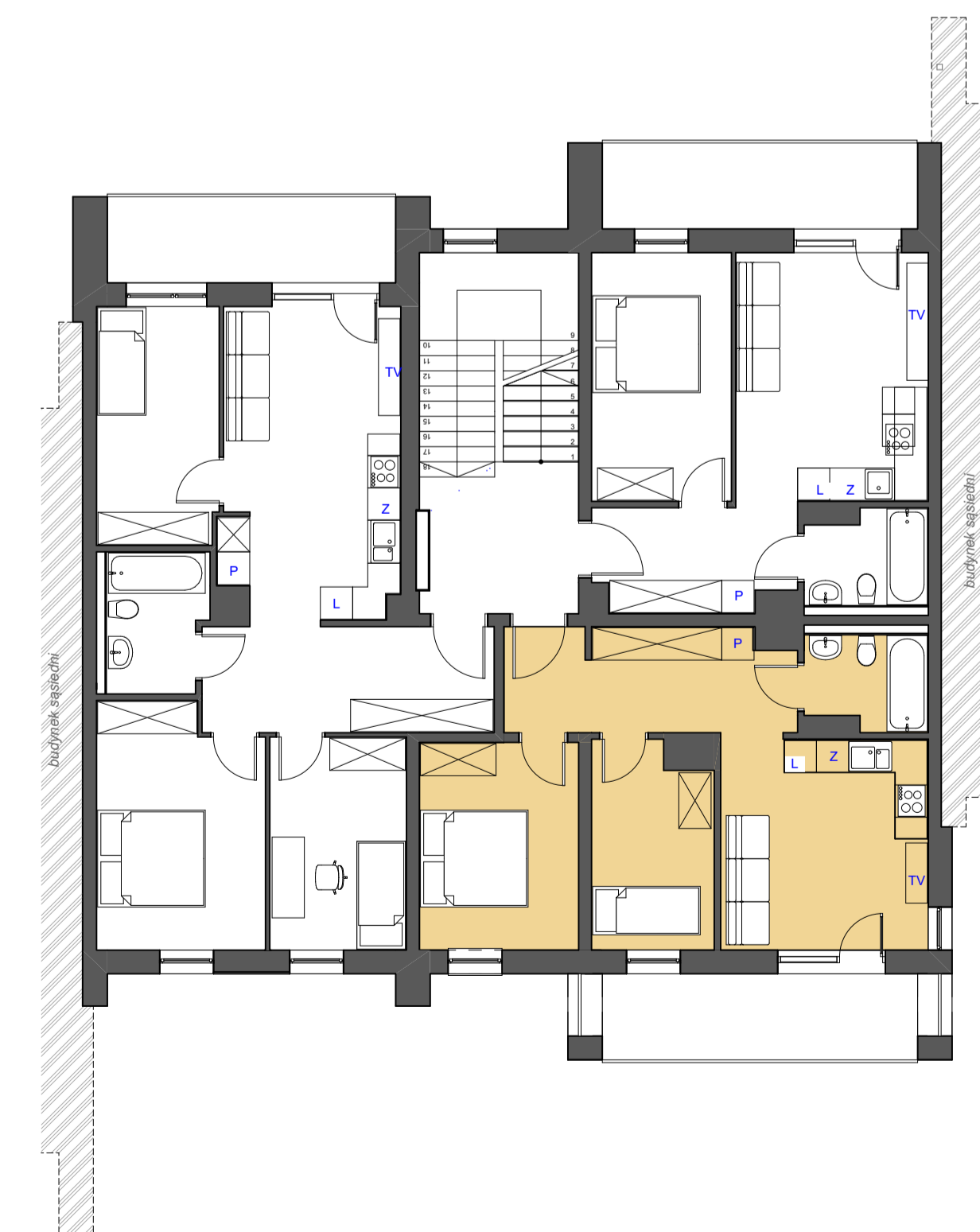
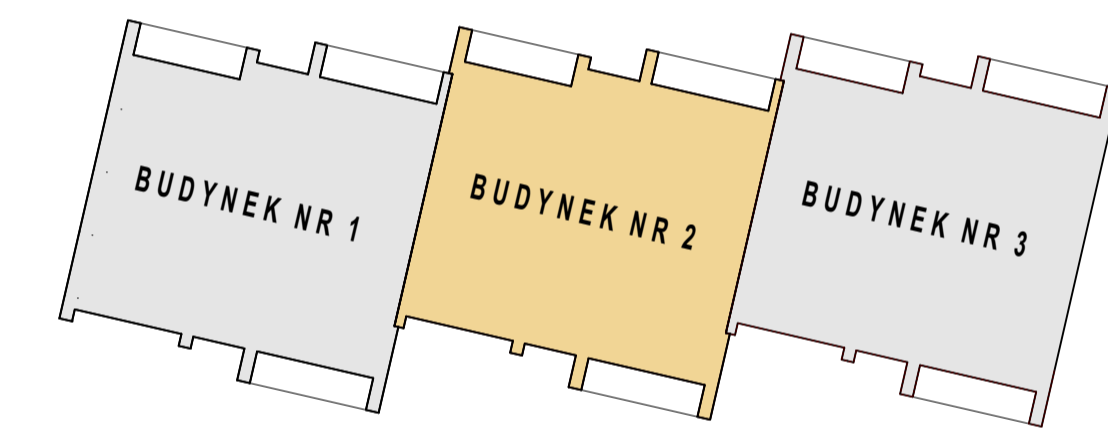
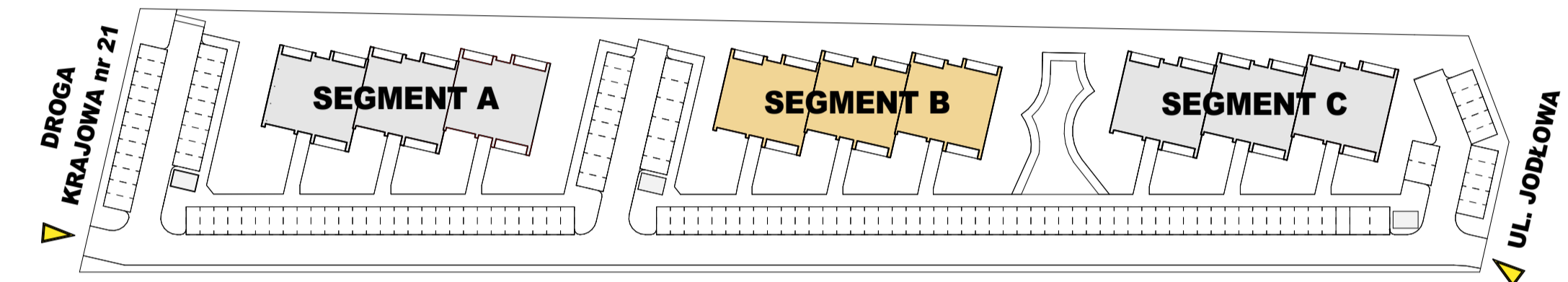
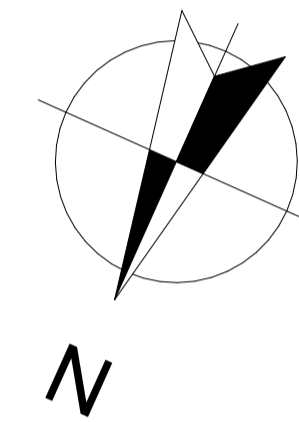
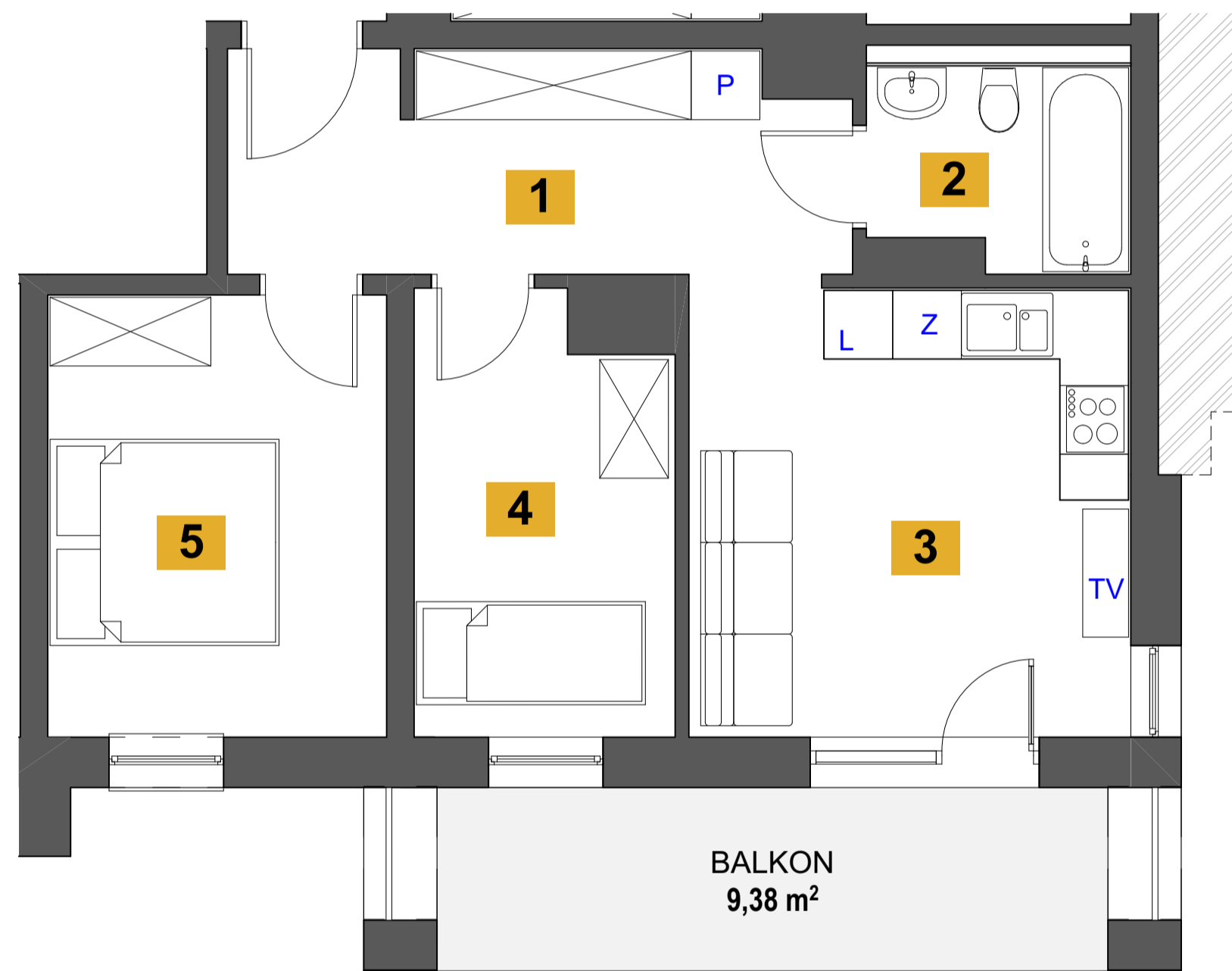




POWIERZCHNIA:
48,03 m²
BUDYNEK:
B2
KONDYGNACJA:
PIĘTRO 1
LOKAL:
1/3



LOKAL MIESZKALNY 1/3		48,03 m ²
01	Hol	10,02 m ²
02	Łazienka	3,71 m ²
03	Pokój dzienny + aneks kuchenny	15,00 m ²
04	Pokój	8,15 m ²
05	Pokój	11,15 m ²