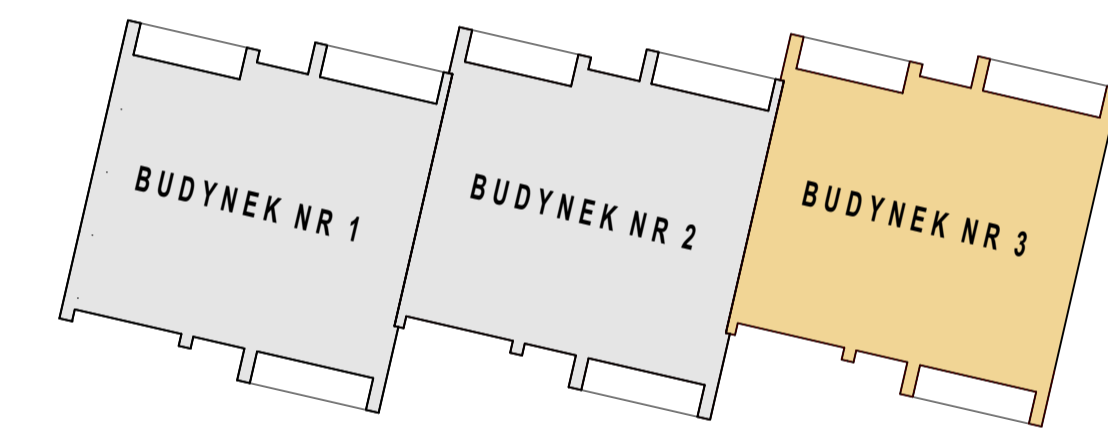
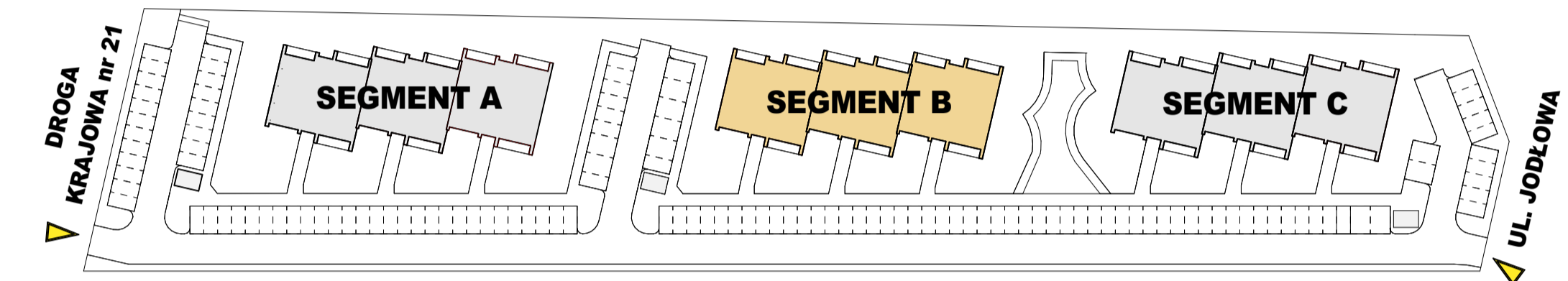
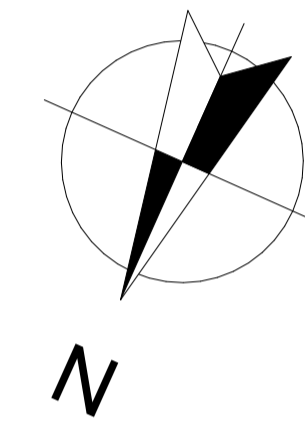
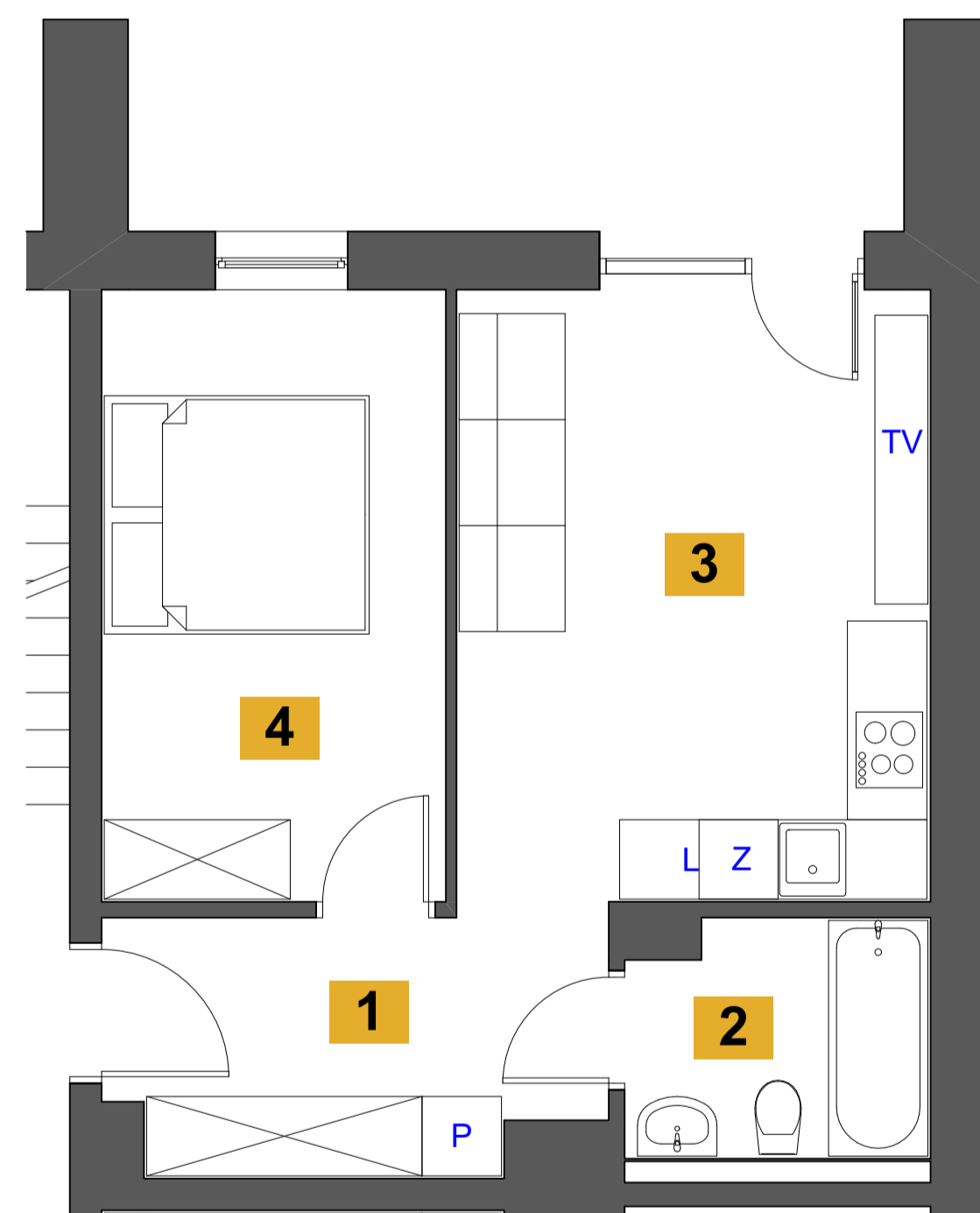




POWIERZCHNIA:
38,75 m²
BUDYNEK:
B3
KONDYGNACJA:
PARTER
LOKAL:
0/2



| LOKAL MIESZKALNY 0/2 | | 38,75 m ² |
|----------------------|--------------------------------|----------------------|
| 01 | Hol | 6,78 m ² |
| 02 | Łazienka | 3,86 m ² |
| 03 | Pokój dzienny + aneks kuchenny | 16,39 m ² |
| 04 | Pokój | 11,72 m ² |

